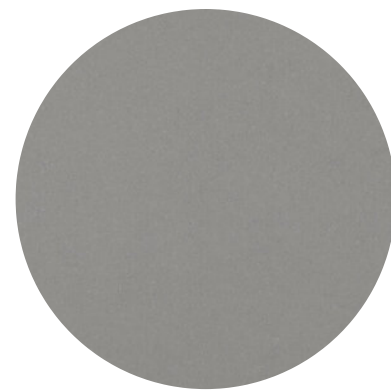


# CLOUDY PORTLAND GREY

The Cloudy collection consists of pure quartz, structural polyester resin and UV-stabilised colour pigments. The Cloudy Portland Grey surface has a uniform background and a fine grain, all light grey in colour.



## Format Standard

305 cm x 140 cm (4.27 sqm)  
120" x 55" (45.96 sqft)

## Thicknesses | Weights\*

1.2 cm x 1/2" | 125 kg - 275 lb  
2 cm x 3/4" | 208 kg - 459 lb  
3 cm x 1 1/4" | 312 kg - 688 lb

## Format Jumbo

320 cm x 164 cm (5.25 sqm)  
126" x 64.5" (56.51 sqft)

## Thicknesses | Weights\*

2 cm x 3/4" | 258 kg - 569 lb  
3 cm x 1 1/4" | 387 kg - 853 lb

## Finish

polished, matt

\* The indicated weight can vary by about 5% due to the different weight specific for the various classes of product.

## Category: 2

<b>Apparent density</b> EN 14617-1:2013	kg/cm <sup>3</sup>	2368	W3 (EN 15285:2008)
<b>Water absorption</b> EN 14617-1:2013	%	0,04 - 0,07	W4
<b>Flexural strenght</b> EN 14617-1:2016	Mpa	70.1	F4 (EN 15285:2008)
<b>Compressive strenght</b> EN 14617-15:2006	Mpa	232	
<b>Impact resistance</b> EN 14617-9:2005	J	9.2	
<b>Linear thermal expansion</b> EN 14617-11:2005	10 <sup>-6</sup> °C <sup>-1</sup>	37.7	
<b>Chemical resistance (HCl and NaOH)</b> EN 14617-10:2012	Classe	C4 for hydrochloric acid C4 for sodium hydroxide	
<b>Abrasion resistance</b> EN 14617-:2012	mm	29.6	A3 (EN 15285:2008)
<b>Slip resistance by means of the pendulum tester (polished finish)</b> EN 14231-:2003		SRVdry= 47 SRVwet= 4	

## Certifications



## Quartzforms SpA

Bruger Str. 10 D-39126 Magdeburg, tel +49 (0) 39 1 53 888 000, fax +49 (0) 39 1 53 888 010

info@quartzforms.com www.quartzforms.com

Colours and brightness of video and printed reproductions are indicative.

The slab simulates natural stone so, some changes are possible in the final product.

630

# CLOUDY PORTLAND GREY



Colours and brightness of video and printed reproductions are indicative. The slab simulates natural stone so, some changes are possible in the final product.